

D-Fuses - European Standard



Class: F and gG/gL

Voltage ratings: 400V_{AC} - 250V_{DC}

Current ratings: 0.5A to 200A

Standards: IEC 60269-3-1
DIN VDE 063 Part 301
DIN 49515 / 49360 / 49365
and 49522

SIBA D-Fuse also known as Diazed and Neozed

Features and Benefits

- ▶ Non interchangeability of fuse links do to graduated contact diameter to current rating with matching gauge piece in fuse base.
- ▶ All fuses have blown fuse indication
- ▶ Fuse bases and accessories available

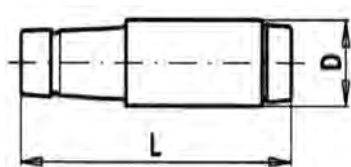
Fuses for Applications

Article	Description	Selection Guide	Technical Data
1000201	ND - E16	567	567
1000204	ND - E16	With blown fuse indication 568	568 - 569
1000504	DII - E27		
1000704	DIII - E33		
1000904	DIV - R1-1/4"		
1001004	DV - R2"		
1002704	D01 - E14	With blown fuse indication 570	570 - 571
1002804	D02 - E18		
1002904	D03 - M30x2		

D	Rated Voltage [Un] 500V _{AC}	Rated Breaking Test Capacity 50kA	Class F	Standard(s) DIN 41687 VDE 0636
----------	--	---	-------------------	---

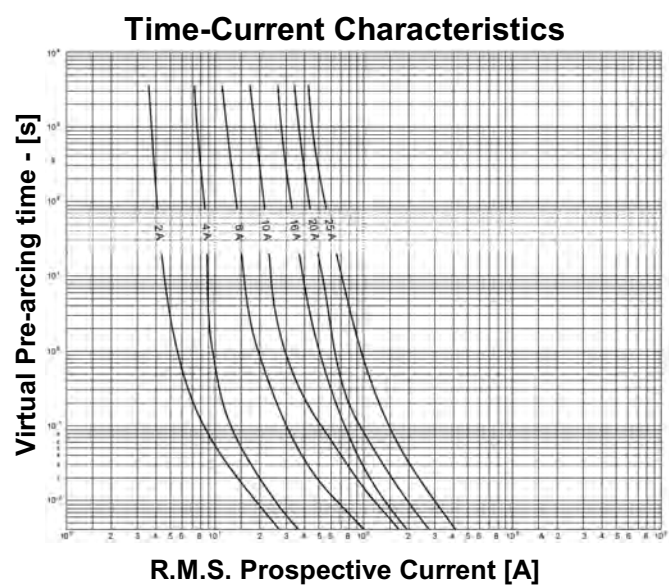
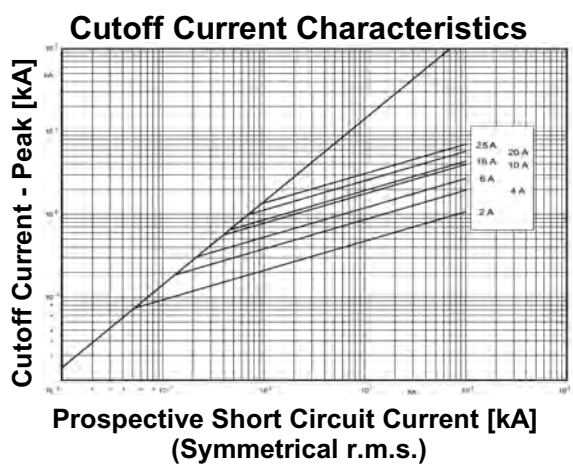
Size ND - E16

Rated Current [A]	ND Article Number	Power Loss [W]	Pre-arc I ² t [A ² s]	Total I ² t @ 250V _{AC} [A ² s]	Total I ² t @ 400V _{AC} [A ² s]	Total I ² t @ 500V _{AC} [A ² s]
2	1000201.2	2.4	5	7.5	9.5	10
4	1000201.4	1.2	30	41	45	50
6	1000201.6	1.4	85	130	150	165
10	1000201.10	2.1	280	440	480	510
16	1000201.16	2.5	400	870	1 050	1 300
20	1000201.20	2.6	930	1 740	2 050	2 300
25	1000201.25	3.4	1 650	2 850	3 400	3 800



Weight [kg per 100]	1.4
Units per Package	50

Dimensions	
D	0.50" / 12.5mm
L	1.97" / 50mm





FUSES

D	Rated Voltage [Un] 500V _{AC}	Rated Breaking Test Capacity 50kA	Class gG/gL	Standard(s) IEC 60 269-3 DIN VDE 0636-3
----------	--	--	-----------------------	--

Size ND, DII, DIII, DIV & DV

Rated Current [A]	ND Article Number	DII Article Number		Power Loss [W]	Pre-arc I ² t [A ² s]	Total I ² t @ 250V _{AC} [A ² s]	Total I ² t @ 500V _{AC} [A ² s]
2	1000204.2	1000504.2		0.9	5.4	11.5	18.5
4	1000204.4	1000504.4		1.2	16	33	53
6	1000204.6	1000504.6		1.7	26	55	90
10	1000204.10	1000504.10		2.1	58	120	200
16	1000204.16	1000504.16		2.5	400	840	1 350
20	1000204.20	1000504.20		2.6	810	1 700	2 800
25	1000204.25	1000504.25		4.1	1 280	2 700	4 400
Weight [kg per 100]							
1.4		3.1					
Units per Package							
50		25					

Rated Current [A]	DIII Article Number	DIV H Article Number	DV H Article Number		Power Loss [W]	Pre-arc I ² t [A ² s]	Total I ² t @ 250V _{AC} [A ² s]	Total I ² t @ 500V _{AC} [A ² s]
35	1000704.35				4.6	3 100	6 500	10 600
50	1000704.50				6.1	4 700	9 900	16 000
63	1000704.63				6.5	5 000	16 900	27 300
80		1000904.80			7.3	6 400	13 400	21 600
100		1000904.100			8.7	32 500	68 300	110 500
125			1001004.125		9	51 900	108 900	176 300
160			1001004.160		10	81 000	170 100	275 400
200			1001004.200		11	190 500	400 000	647 500
Weight (kg per 100)								
5.3		11.4	23.1					
Units per Package								
25		10	10					

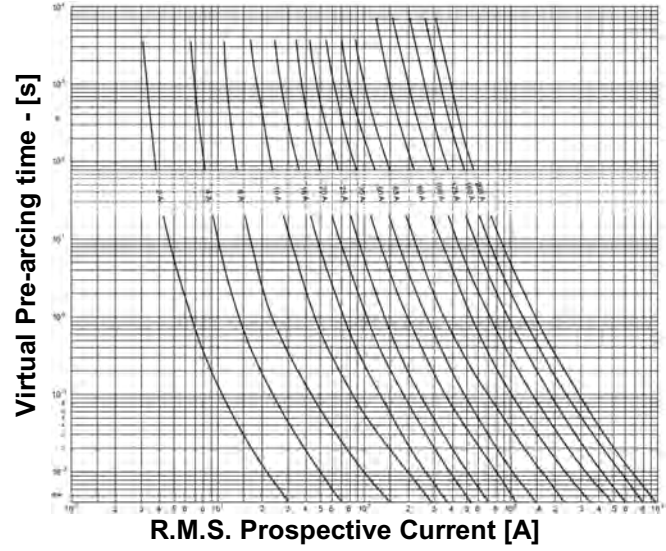
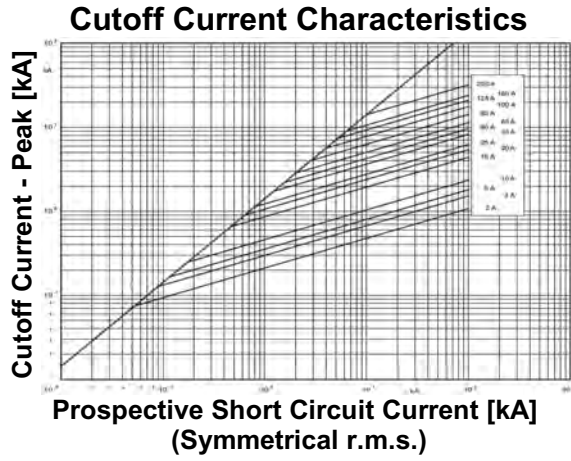
Dimensions [in / mm]					
	ND 1000204	DII 1000504	DIII 1000704	DIV 1000904	DV 1001004
D	0.50 / 12.5	0.87 / 22	1.06 / 27	1.30 / 33	1.80 / 46
L	1.97 / 50	1.97 / 50	1.97 / 50	1.97 / 50	1.97 / 50



FUSES

D	Rated Voltage [Un] 500V _{AC}	Rated Breaking Capacity 50kA	Test Class gG/gL 500V _{AC}	Standard(s) IEC 60 269-3 DIN VDE 0636-3
Size ND, DII, DIII, DIV & DV				

Time-Current Characteristics





FUSES

D	Rated Voltage	Rated Breaking Test	Class	Standard(s)
	[Un]	Capacity	gG/gL	IEC 60 269-3-1
	400V _{AC} 250V _{DC}	50kA 8kA	400V _{AC} 250V _{DC}	DIN VDE 0636-301

Size D01, D02 & D03

Rated Current [A]	D01 Article Number	D02 Article Number	D03 Article Number	Power Loss [W]	Pre-arc I ² t [A ² s]	Total I ² t @ 250V _{AC} [A ² s]	Total I ² t @ 400V _{AC} [A ² s]
2	1002704.1			2.2	0.6	1.5	2.4
2	1002704.2			1.0	3.2	6.6	8.6
4	1002704.4			1.8	13	21	25
6	1002704.6			1.8	45	67	160
10	1002704.10			1.5	200	300	350
16	1002704.16			2.0	440	630	1 100
20		1002804.20		1.4	750	1 420	1 800
25		1002804.25		1.8	1 050	2 000	2 600
35		1002804.35		2.5	2 800	4 800	6 500
50		1002804.50		2.7	5 800	12 000	14 000
63		1002804.63		3.6	7 500	16 000	22 000
80			1002904.80	1.0	13 500	25 000	35 000
100			1002904.100	0.7	22 000	45 000	51 000

Weight [kg per 100]

0.62	1.4	4.2
------	-----	-----

Units per Package

50	50	10
----	----	----

Dimensions [in / mm]

	D01 1002704	D02 1002804	D03 1002904
D	0.43" / 11	0.60" / 15.3	0.90" / 22.5
L	1.42" / 36	1.42" / 36	1.70" / 43



FUSES

D	Rated Voltage [Un]	Rated Breaking Test Capacity	Class Voltage	Standard(s)
	400V _{AC}	50kA	400V _{AC}	IEC 60 269-3-1
	250V _{DC}	8kA	250V _{DC}	DIN VDE 0636-301

Size D01, D02 & D03

Time-Current Characteristics

